

# Electronic Torque Wrenches



- Removable ratchet head for interchangeable inserts
- RS232 port connection, bi-directional for down load / upload communication
- Large alphanumeric LCD display
- Simple, logical, menu driven operation
- Accuracy  $\pm 1\%$  of reading, 10% to 100% of range in both directions
- Auto zero check on power up
- PC software in CD-ROM format, Windows, MS Excel and SPC compatible
- High and Low level LED and audible alarm
- Programmable for 99 preset values
- Memory capacity of 2094 values, date and time stamped
- Unit conversion—Nm, cNm, mkg, cmkg, lbf.ft, lbf.in, oz.in
- Accepts standard or rechargeable batteries, with quick battery change without data loss
- Automatic power save to conserve battery life

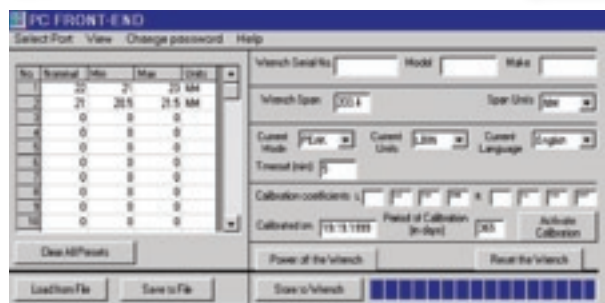
## Multi-function Manually Operated Electronic Torque Wrenches

Ref.	Square Drive	Torque Range			Length mm	kg
		Nm	lbf.in	lbf.ft		
DVTM28E	1/4"	2.8-28	25-250	2.1-20.8	400	0.98
AVTM125E	3/8"	12.5-125.0	110-1100	9.2-92.2	400	0.98
EVTM250E	1/2"	25-250	220-2200	18.0-180	475	1.17

Multi-function manual electronic torque wrenches are supplied with a removable ratcheting drive, and accept standard interchangeable end fittings

## Data Transfer PC Software

- Two way transmission between tool and PC, preset values can be selected on PC and uploaded to the tool or alternately set on the tool and downloaded to the PC
- Security to levels of access via password
- On power-up the tool automatically registers to the PC: tool model, serial number, range span, units, language and calibration data
- Stored data includes: location, date and time, minimum, nominal and maximum preset values with torque value achieved
- Data can be stored in Microsoft Excel format



# Torque Drivers

## Hexagonal Drive - Female - Adjustable

Ref.	Torque Range		Hexagon Drive	Hex to square	Length mm	kg
	Nm	Hexagon Drive				
TD20	4-20cNm	4mm	1USB4M	96.5	0.075	
TD75	15-75cNm	1/4"	DPH7	130	0.13	
TD250	0.5-2.5Nm	1/4"	DPH7	148	0.3	
TD1000	2-10Nm	1/4"	DPH7	169	0.4	

- Parallax free vernier scale on adjustable versions



- Britool torque drivers have been specifically developed for use across all industries assembling, maintaining and repairing small mechanical and electrical assemblies, where low torque values are required
- Variable with vernier scale, non-graduated fixed production and dial indicating formats
- Designed and manufactured to meet and exceed ISO 6789
- Release at preset torque—handle rotates freely when the required torque value is achieved. Prevents unintentional over torqueing
- Automatic reset, facilitating rapid repetitive operation

- Modern ergonomic design for a firm, positive grip, allows accurate torque application – and is comfortable for prolonged use
- Reduced weight allows accurate torque application even at ultra low torque values
- 2 mini drivers covering ranges 4cNm to 75cNm
- 2 standard sizes covering a range of 0.5Nm to 10Nm
- Security against accidental adjustment—separate adjusting key provided
- 2.5Nm and 10Nm versions suitable for TDH1 ratchet handle to facilitate rapid tightening to higher torque values

## Ratchet Handle

Ref.	Square Drive	Length mm	kg
TDH1	1/4 in 6mm	84	0.08



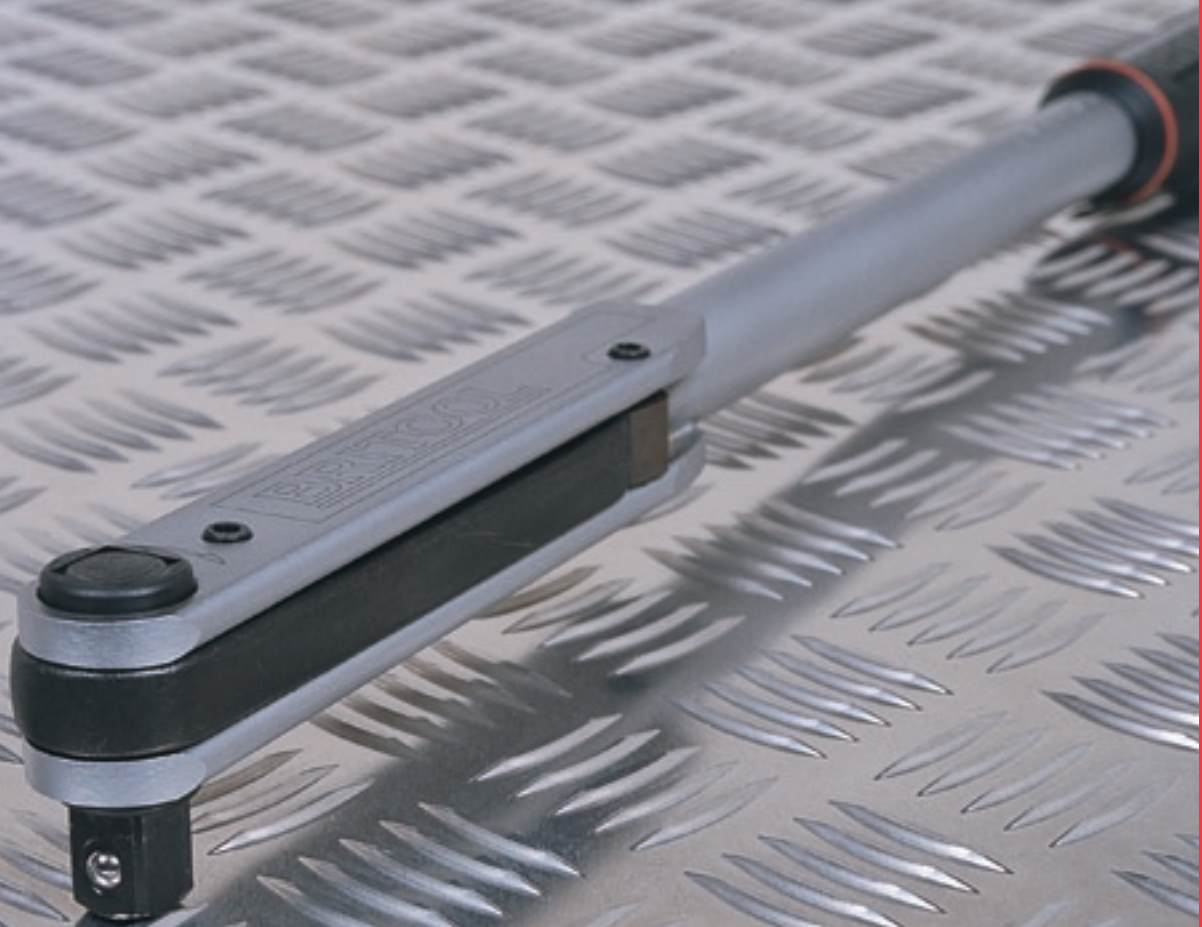
Facom UK Limited · Churchbridge Works · Walsall Road · Cannock · Staffordshire · WS11 8JR

T: +44(0)1922 702100 · F: +44(0)1922 702101 · Export Sales: +44(0)1922 702250

E: uk\_sales@britool.co.uk · Export: export\_sales@britool.co.uk · www.tools.co.uk



# Torque Wrenches



# Classic Mechanical Torque Wrenches

The torque wrench is an essential and sometimes mandatory tool that is now fundamental in most garages and workshops. The Britool torque wrench range has been carefully designed to provide a range of solutions to meet the needs of the torque-tightening user.

## Unique 3-phase Mechanism

A progressive torque build-up to the selected setting is easily detected by three clear signals:

1. **SIGHT**—see the mechanism progressively move towards the point of break as the load is applied
  2. **TOUCH**—feel the point of torque
  3. **SOUND**—unmistakeable CLICK
- This makes it ideal for use in noisy environments

## Accuracy

- Exceeds requirements of ISO 6789
- Certified accuracy to within +/-4%



**i**

A and E series adjustable torque wrenches are supplied in a sturdy plastic storage case.

## 3/8" and 1/2" Square Drive

Ref.	Square Drive	Nm	Torque Range			Length	kg
			kg.m	lbf.in	lbf.ft		
AVT100A	3/8"	2.5-11	0.3-1.2	20-100	2-8	318	0.56
AVT300A	3/8"	5-33	0.5-3.4	40-300	4-24	422	0.71
AVT600	3/8"	12-68	1.2-7	100-600	10-50	476	1.02
EVT600A	1/2"	12-68	1.2-7	100-600	10-50	476	1.02
EVT1200A	1/2"	25-135	3-14	200-1200	20-100	546	1.62
EVT2000A	1/2"	50-225	5-23	400-2000	40-160	597	2.38
EVT3000A	1/2"	70-330	7-35	600-3000	50-250	825	3.12

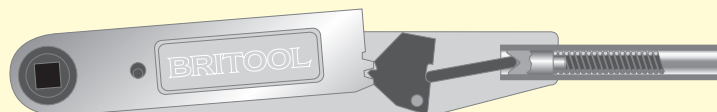
All models are supplied in a sturdy blow moulded safe box and a calibration certificate in compliance with ISO 6789

## 3/4" and 1" Square Drive

Ref.	Square Drive	Torque Range		Length	kg
		Nm	lbf.ft		
HVT5000	3/4"	140-560	100-410	1130	6.58
HVT7200	3/4"	200-810	150-600	1181	7.00
GVT8400	1"	480-940	350-700	1397	12.70

All models are supplied in a sturdy metal safe box and a calibration certificate in compliance with ISO 6789

## Classic Mechanical Torque Wrench - non-length dependant



Unlike most other torque wrenches, the mechanism pivots around the square drive. This gives a major advantage in that the torque wrench is not length dependant. As a result there is no variation to the application of the preset torque value, no matter where the handle is grasped.



# Ratcheting Torque Wrenches

## The Tool That You Have Been Asking For!

In the Britool tradition of excellence the all new Britool Series 2 ratchet torque wrench has been designed and engineered to satisfy the needs of the professional user.

The addition of Series 2 ensures that Britool can always offer the correct solution to your bolt tightening problems *"The right tool for the right job"*

## Designed for arduous professional use – strong, compact, tough

### Integrated Ratchet With Direction Change Cap

- Strong 72 tooth mechanism
- Added strength – 17 teeth engaged under working load – giving an extremely durable high strength mechanism, typically 45% more strength than conventional ratchets.
- Compact head with 5° working arc- ideal for use in confined applications

### Split Scale Adjustment System

- Single unit scale – for simplified use, no confusion or errors as a result of incorrect setting.
- Linear major scale – for rapid coarse adjustment
- Rotary minor scale – sub divides the linear scale for fine adjustment.
- Adjustment feel – tactile count of scale when setting.

### Positive Lock

Torque setting is positively locked into position with thumb lock – preventing accidental adjustment while in use.

### Ergonomic Comfort Grip Handle

- Unique ergonomically designed handle - Comfortable for continuous, accurate and consistent use.
- Materials selected and arduously tested to ensure strength and resistance to all commonly used Industrial chemicals and hydrocarbons

### Torque Release Mechanism

- Precision engineered components – achieving long term accuracy and reliability.
- Clear touch and sound signals on reaching pre set value
- Automatic reset – ready for next application



**NEW**  
**SERIES 2**

Reference	Drive	Capacity Nm		Graduations Nm	Length mm	Weight kg.
		Min.	Max.			
D25T	1/4" Ratchet	5	25	0.1	290	0.75
A50T	3/8" Ratchet	10	50	1	370	0.9
E100T	1/2" Ratchet	20	100	1	435	1.05
E200T	1/2" Ratchet	40	200	1	495	1.25
E340T	1/2" Ratchet	60	340	2	650	1.55

### Torque Wrenches

- Complies with ISO 6789, NF EN 26789 and DIN ISO 6789
- Certified accuracy to within +/-4%
- Supplied with calibration certificate

# Torque Multipliers

- i**
- Britool mechanical hand-operated torque multipliers are powerful, compact, robust and reliable units which deliver a precise multiplied torque output greater than the input
  - The benefit of this is a massive output torque from a comfortable and easily achievable small input value
  - When using a torque wrench as an input device, the wrench is set by dividing the required output torque by the multiplication factor provided
  - No other special equipment is required, the unit is placed between the drive socket and the input device (torque wrench or ratchet handle)
  - As the load is applied the counter-rotation of the body is taken by the reaction member, and the input load transferred via the epicyclic gearbox, multiplied and transferred directly into to the output drive



Ref.	Input Drive	Max Input Nm	Output Drive	Max Output Nm	Torque Multiplication Factor	Reaction Arm	Reaction foot	kg
HXT28	3/4"	560	1"	2800	5 x	included	included	3.3*
EXT13	1/2"	407	3/4"	1350	3.3 x	included		1.4

\*Weight excluded reaction arm—total kit weight 6.0kg

Both units supplied in a plastic storage case complete with reaction member/s instructions and conversion chart